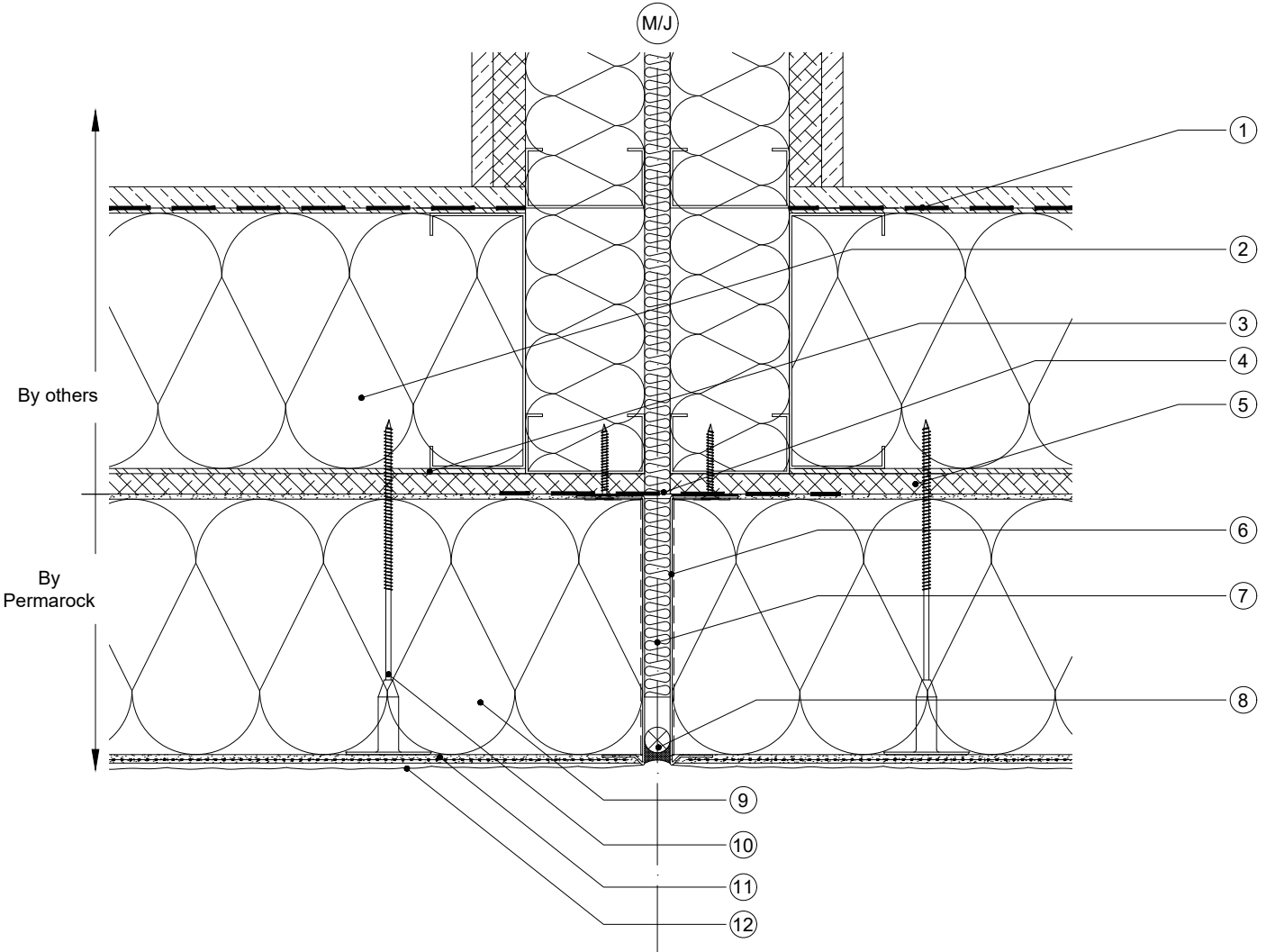


NOTE : 1. Steel frame details and insulation between SFS studs are indicative only.
 2. Reinforcement layer fixings may be required.



- ① Vapour Control Layer (by others)
- ② Insulation between studs (by others) if required
- ③ Light weight steel framing (by others)
- ④ Flexible seal across joint in CP boards (e.g. EPDM)
- ⑤ min 12 mm cement - bonded particle board or other suitable mineral sheathing board (by others)
- ⑥ Permarock Full System Stop Bead seal to CP Board (with Permarock Silicone Sealant) and mechanically fixed with Permarock Profile Fixing Screw at max 300 mm cts. Adjacent sections interconnected with Permarock Full System Joint Clips
- ⑦ Insulation packer (by others)
- ⑧ Seal detail (by others)
- ⑨ Permarock Mineral Fibre Insulation on Permarock Lamella Adhesive or Permarock HP Adhesive (100% coverage)
- ⑩ Permarock Insulation Fixing
- ⑪ Permarock Bedding Mortar incorporating Permarock Reinforcing Mesh
- ⑫ Permarock Decorative Finish

permarock
 PRODUCTS LTD

Permarock Products Ltd.
 Jubilee Drive
 Loughborough
 Leicestershire
 LE11 5TW
 Tel: (01509) 262924

Email: permarock@permarock.com
 Web: www.permarock.com

Client : -
 Project : Standard Detail
 Notes :

Title : Plan Section - Vertical Joint with Full System Stop Beads for Horizontal Movement					Drawn By : TYY	Approved By : JFR
Project Ref : -					Scale : NTS	Date : 07/11/2017
Rev	Date	Amendments	By	Approved	Original Size : A4	Rev.2
2	22/11/24	HP Adhesive	HN	JFR		