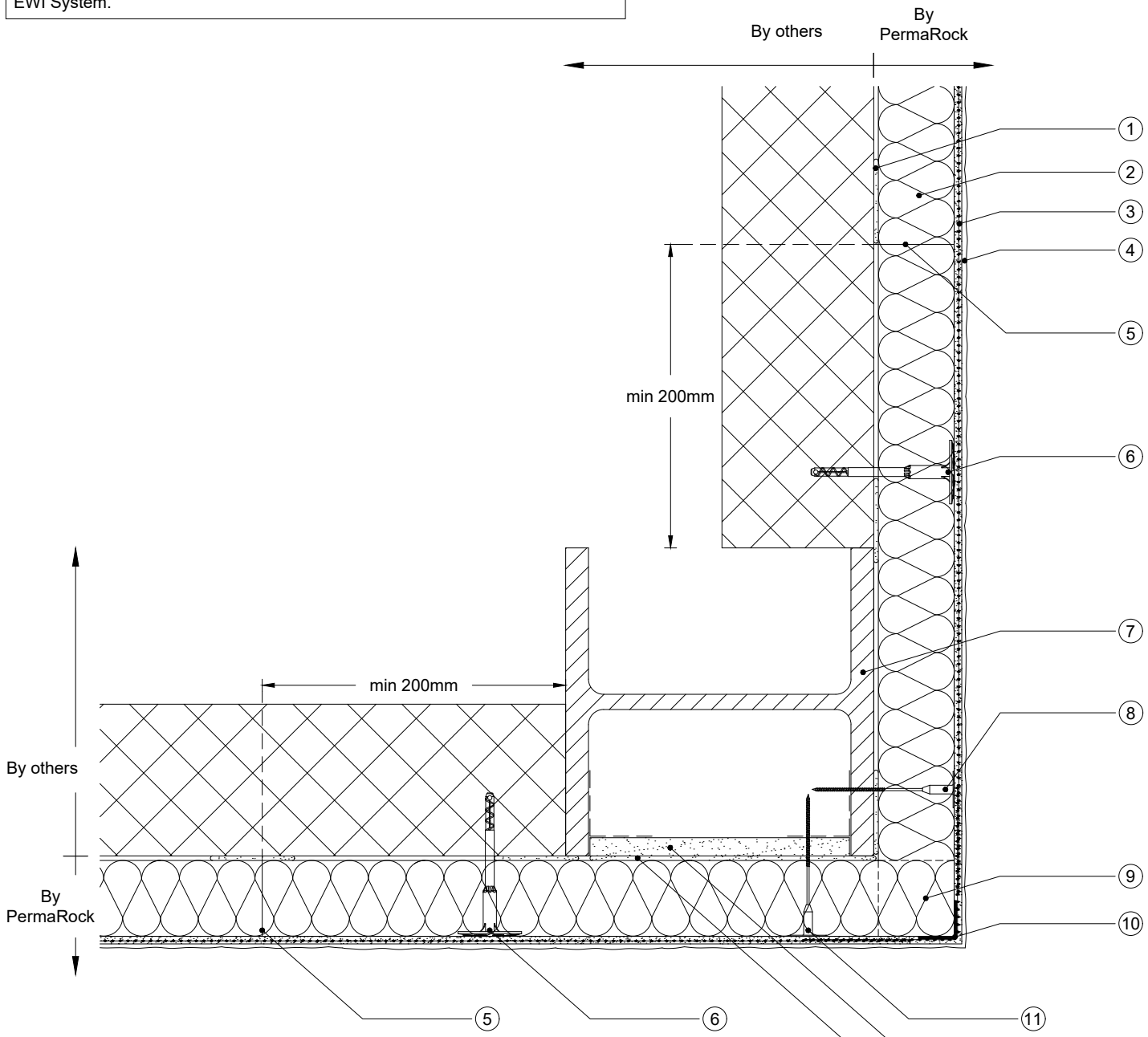


NOTE : Existing render and adhesive residue to be removed from steel, blockwork and retained sheathing boards prior to the installation of Permarock EWI System.



- ① Permarock Adhesive (40% coverage min)
- ② Permarock Mineral Fibre Insulation
- ③ Permarock Bedding Mortar incorporating Permarock Reinforcing Mesh
- ④ Permarock Decorative Finish
- ⑤ Insulation Board Joints
- ⑥ Permarock Insulation Fixings into blockwork
- ⑦ Steel column at corner
- ⑧ Permarock Insulation Screw Fixing. Fixings at max. 300mm CTRS for full height of corner
- ⑨ Rows of insulation boards interlocked at external corner
- ⑩ Permarock Corner Bead
- ⑪ Permarock Insulation Fixing into 12mm Cement-fibre Board at max. 300mm CTRS for full height of corner
- ⑫ 12 mm Cement-fibre Board fixed into the web of steel by others
- ⑬ Permarock Lamella Adhesive or Permarock HP Adhesive (100% coverage)

permarock
PRODUCTS LTD

Permarock Products Ltd.
Jubilee Drive
Loughborough
Leicestershire
LE11 5TW
Tel: (01509) 262924

Email: permarock@permarock.com
Web: www.permarock.com

Client : -	Title : Plan Section - External Corner with Steel Column				Drawn By : HN	Approved By : JFR
Project : Standard Detail	Project Ref : -				Scale : NTS	Date : 10/11/2023
Notes :	Rev	Date	Amendments	By	Approved	Original Size : A4 Rev.1
	1	25/11/24	HP Adhesive	HN	JFR	