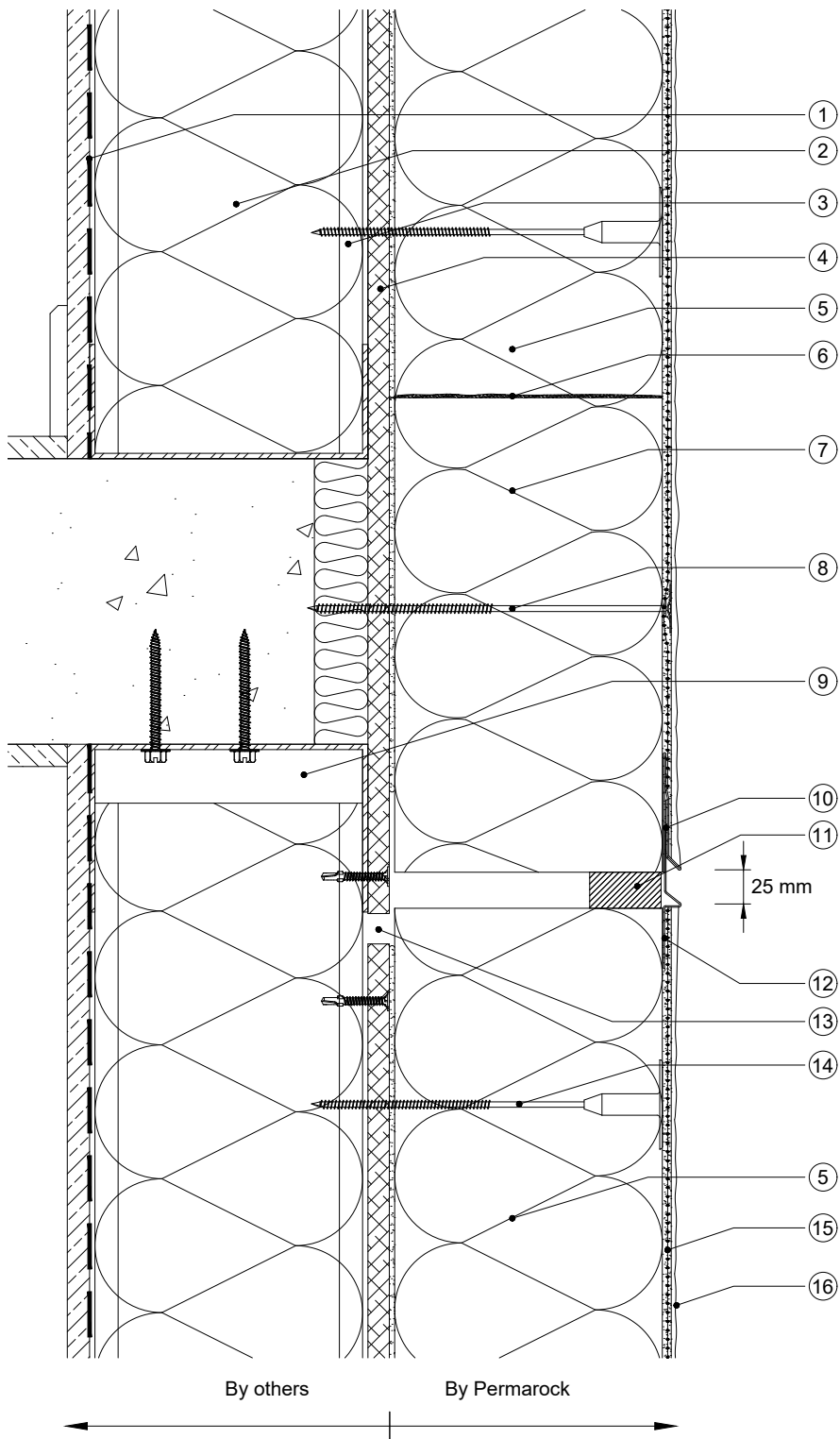


NOTE : 1. Width of joint at (11) to be sufficient to accommodate maximum deflection at (9) plus thickness of compression joint sealing tape at full compression.  
 2. Steel frame details and insulation between SFS studs are indicative only.



- ① Vapour Control Layer (by others)
- ② Insulation between studs (by others) if required
- ③ Light weight steel framing
- ④ min 12 mm cement - bonded particle board or other suitable mineral sheathing board (by others)
- ⑤ Permarock Mineral Fibre Insulation on Permarock Lamella Adhesive or Permarock HP Adhesive (100% coverage)
- ⑥ Gaps between insulation boards and fire barrier insulation filled with Permarock PU-Foam B2
- ⑦ Permarock Mineral Fibre Lamella Insulation, 200 mm wide, fully adhesively bonded mechanically fixed forming continuous horizontal fire barrier\*
- ⑧ Permarock Stainless Steel washer + screw through reinforcing mesh at max 600 mm centres, staggered along centreline of fire barrier
- ⑨ Deflection gap between slotted head and stud
- ⑩ Permarock Surface-mounted Compression Joint, PPC aluminium perforated top section\*\*
- ⑪ Permarock Compression Joint Sealing Tape - size to suit joint dimension and movement requirement
- ⑫ Permarock Surface-mounted Compression Joint, PPC aluminium perforated lower section\*\*\*
- ⑬ Gap between sheathing board to allow for vertical deflection movement
- ⑭ Permarock Insulation Fixing
- ⑮ Permarock Bedding Mortar incorporating Permarock Reinforcing Mesh
- ⑯ Permarock Decorative Finish

\* If Permarock Mineral Fibre Insulation is used at (5), a separate horizontal fire barrier is not required at (7).  
 \*\* Top sections: Ensure that the bead is allowed to move. DO NOT restrict the thermal expansion of the bead. Seal the adjacent top sections with a high modulus silicone sealant.  
 \*\*\* Lower sections: A 3 mm gap MUST be left between adjacent sections during installation in hot weather conditions, or a 6 mm gap in cold weather conditions.

**permarock**  
 PRODUCTS LTD

Permarock Products Ltd.  
 Jubilee Drive  
 Loughborough  
 Leicestershire  
 LE11 5TW  
 Tel: (01509) 262924

Email: permarock@permarock.com  
 Web: www.permarock.com

Client : -	Title : Section - Deflection Head with Horizontal Joint and Fire Barrier EWI System (2)				Drawn By : TYY	Approved By : JFR
Project : Standard Detail	Project Ref : -				Scale : NTS	Date : 30/09/2019
Notes :	Rev	Date	Amendments	By	Approved	Original Size : A4 Rev.2
	2	21/11/24	HP Adhesive	HN	JFR	