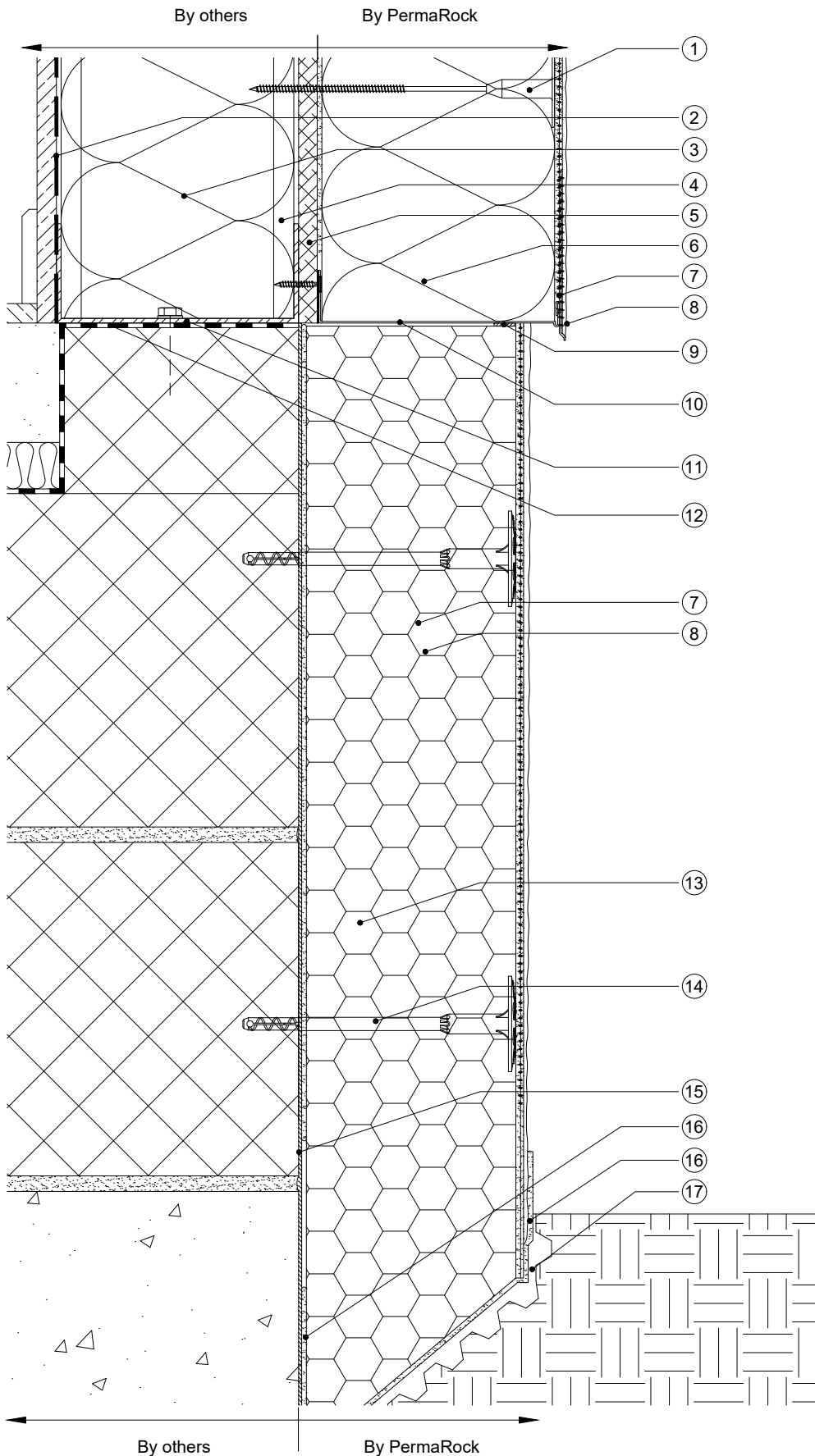


NOTE : Steel frame details and insulation between SFS studs are indicative only.



- ① Permarock Insulation Fixing
- ② Vapour Control Layer
- ③ Insulation between studs (by others) if required
- ④ Light weight steel framing
- ⑤ min 12 mm cement - bonded particle board or other suitable mineral sheathing board
- ⑥ Permarock Mineral Fibre Insulation (thickness to specification) on Permarock Lamella Adhesive or Permarock HP Adhesive (100% coverage)
- ⑦ Permarock Bedding Mortar incorporating Permarock Reinforcing Mesh
- ⑧ Permarock Decorative Finish
- ⑨ Permarock Sealing Tape SEA/TP610/3-6
- ⑩ Permarock Starter Track with clip-on drip-edge bead. Starter track mechanically fixed with Permarock Profile Fixings at max 300 mm cts. Permarock Distance Spacers at fixing points to maintain line as required.
- ⑪ Slotted track
- ⑫ DPC
- ⑬ Permarock Plinth Insulation System with Permarock EPS200 adhesively bonded and mechanically fixed to substrate
- ⑭ Permarock Insulation Fixing
- ⑮ Proprietary waterproof coating/DPM or Permarock BituCoat Adhesive Coating scratchcoat layer
- ⑯ Permarock BituCoat Adhesive Coating
- ⑰ Proprietary Drainage Sheet

| Permarock Starter Track |              |
|-------------------------|--------------|
| BAS/XXMF/N6             | Thin Render  |
| BAS/XXMF/N10            | Thick Render |

**permarock**  
PRODUCTS LTD

Permarock Products Ltd.  
Jubilee Drive  
Loughborough  
Leicestershire  
LE11 5TW  
Tel: (01509) 262924

Email: permarock@permarock.com  
Web: www.permarock.com

|                           |                               |                |                    |
|---------------------------|-------------------------------|----------------|--------------------|
| Client : -                | Title : Typical Wall Base (1) | Drawn By : TYY | Approved By : JFR  |
| Project : Standard Detail | Project Ref : -               | Scale : NTS    | Date : 10/07/2015  |
| Notes :                   | Rev                           | Date           | Amendments         |
|                           | 2                             | 22/11/24       | HP Adhesive        |
|                           | By                            | Approved       | Original Size : A4 |
|                           | HN                            | JFR            | Rev.2              |